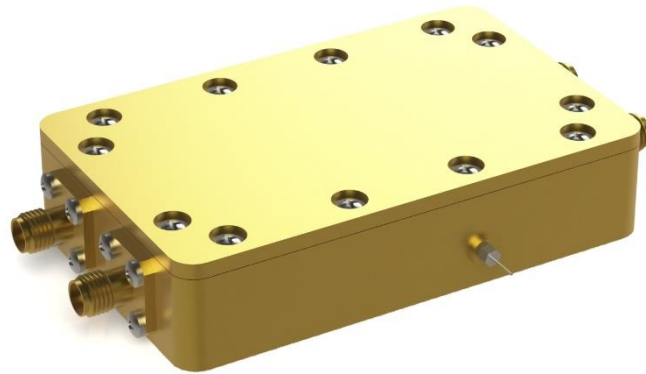


Rev:A00

## Differential amplifier



The differential amplifier is used to suppress the common mode noise of the AWG (arbitrary waveform generator) differential signal. And amplify the output as needed. The output port power is divided into two channels, one is for the test system, and the other is for signal monitoring. The phase and amplitude of the two output signals are kept low unbalanced.

### Technical requirements

Items	Specifications
<b>Model</b>	AMPM50011A003
<b>Differential signal input frequency</b>	DC~500MHz
<b>Input signal amplitude</b>	≤1.5Vpp
<b>Gain</b>	0±0.25dB
<b>Common mode rejection ratio</b>	60dB(TYP)
<b>(HD2) Second-order harmonic distortion (HD2)</b>	-60dBC@500MHz ( 1.5Vpp output)
<b>(HD3) Third-order harmonic distortion (HD3)</b>	-55dBC@500MHz ( 1.5Vpp output)
<b>Number of output ports</b>	2 (Single-ended)
<b>Phase imbalance between output ports</b>	≤3°
<b>Amplitude imbalance between output</b>	≤0.5dB
<b>Impedance</b>	50Ω
<b>Connector type</b>	SMA-F
<b>Power</b>	DC+5V